
QLD

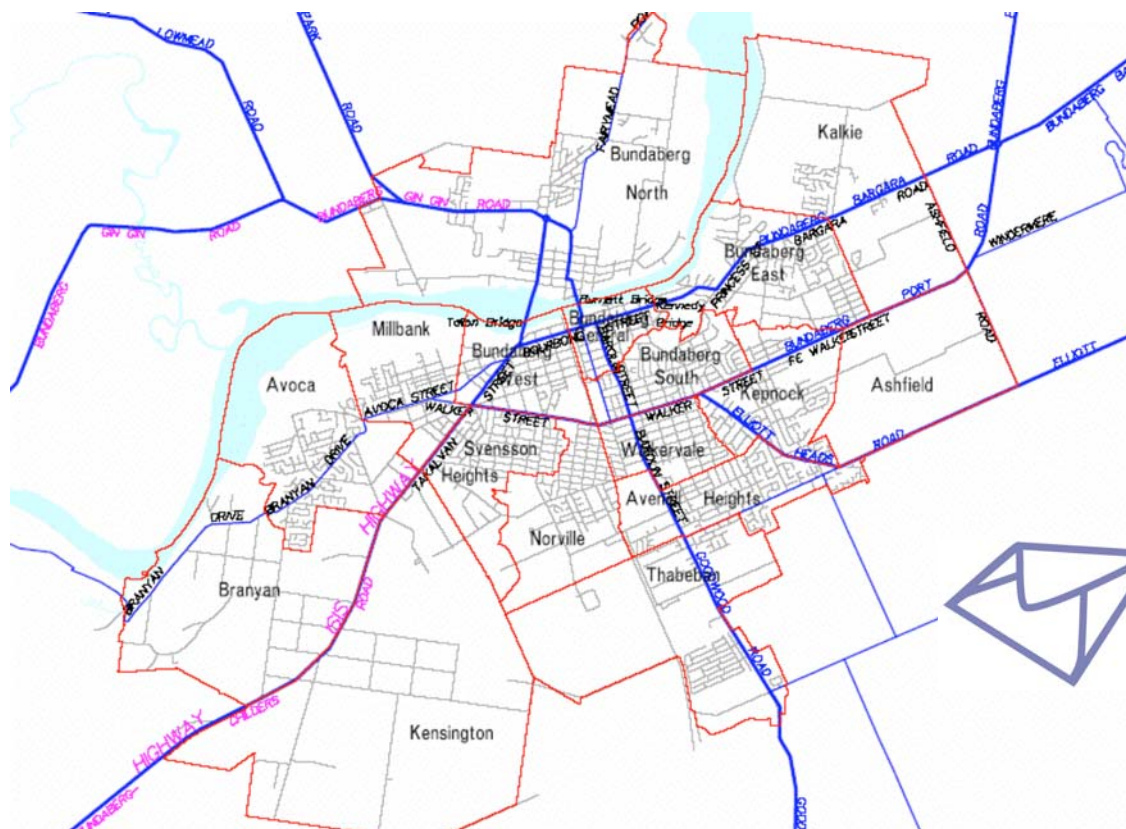
Advertising Opportunity

Available Council Areas, Suburbs and Postcodes

July 2005



Suburbs and Postcodes within the Bundaberg City Council area



Kensington 4670

Branyan 4670

Avoca 4670

Millbank 4670

Svensson Heights 4670

Norville 4670

Thabeban 4670

Avenell Heights 4670

Bundaberg West 4670

Bundaberg Central 4670

Bundaberg South 4670

Bundaberg North 4670

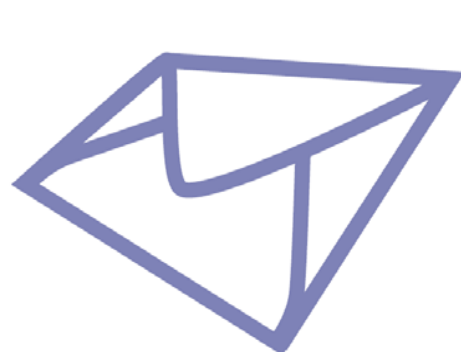
Bundaberg East 4670

Walkervale 4670

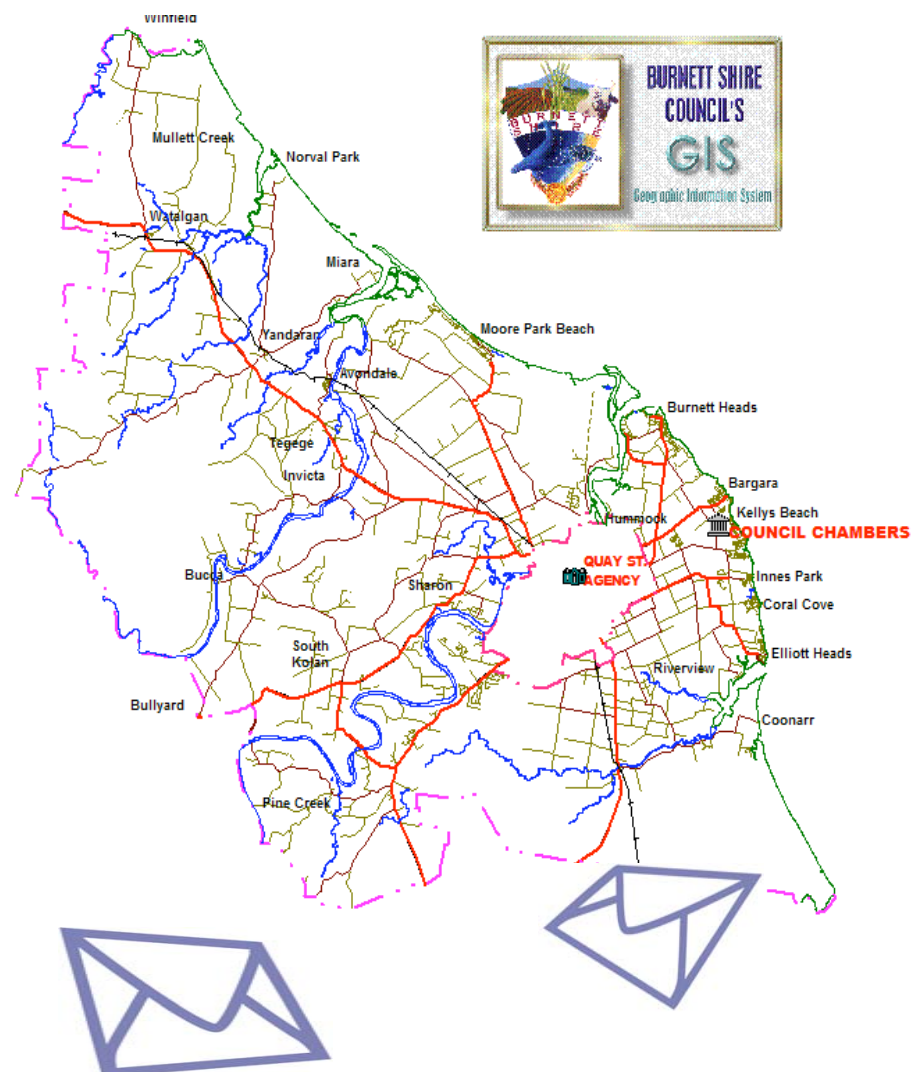
Kepnock 4670

Kalkie 4670

Ashfield 4670



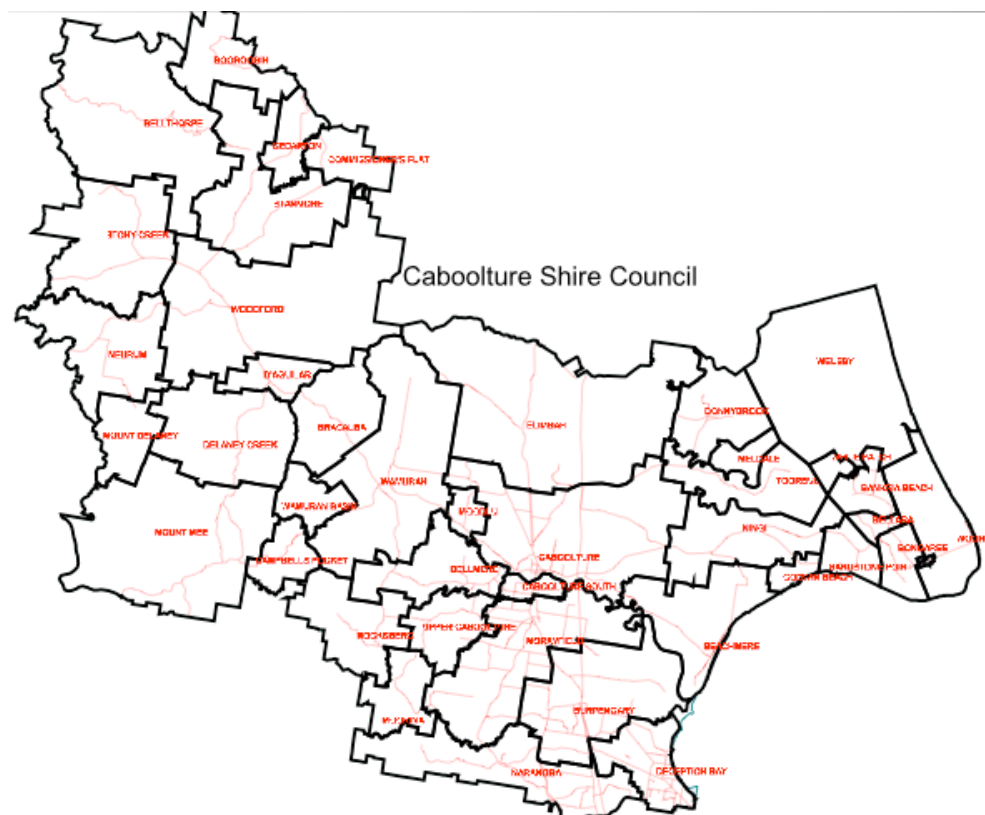
Suburbs and Postcodes within the Burnett Shire Council area



Avondale	4670	Innes Park	4670
Bargara	4670	Invicta	4670
Bingera Weir	4670	Kelly's Beach	4670
Birthingbamba	4670	Kinkuna Bay	4670
Booyan	4680	Langbeckers Rd	4670
Branyan	4670	Lindemans Rd	4670
Bucca	4670	Kalkie	4670
Bullyard	4671	Miara	4670
Burnett Heads	4670	Monduran	4671
Clayton	4670	Moore Park	4670
Coonarr	4670	Moorlands	4670
Coral Cove	4670	Mullett Creek	4670
Duncraig	4670	Norval Park	4670
Elliott Heads	4670	Pine Creek	4670
Elliott Siding	4670	Riverview	4303
Fairydale	4670	Sharon	4670
Gillens Creek	4670	Somerville	4670
Givelda	4670	South Kolan	4670
Gooburru	4670	Tegege	4670
Hummock	4670	Watalgan	4670
		Welcome Ck	4670
		Winfield	4670
		Woongarra	4670
		Yandaran	4673



Suburbs and Postcodes within the Caboolture City Council area



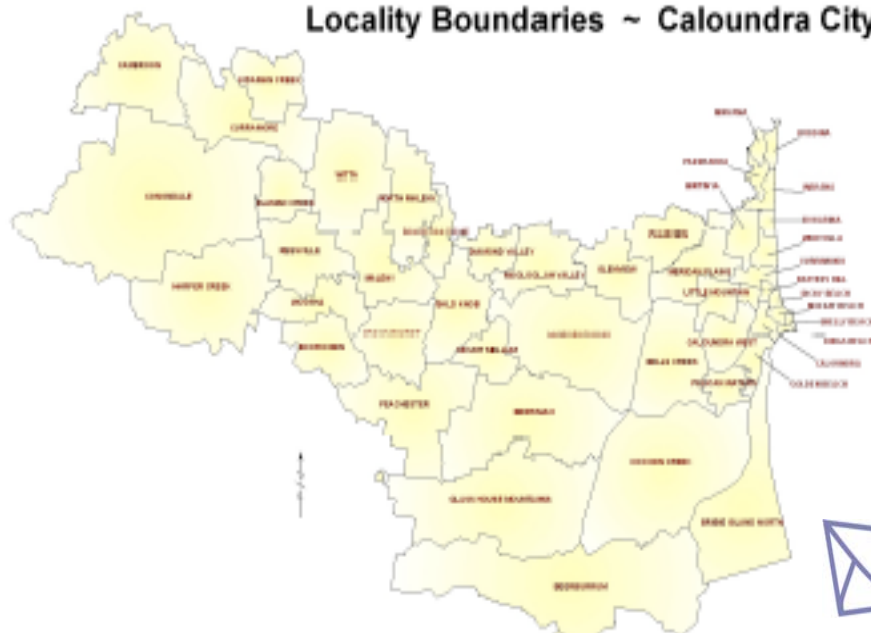
Banksia Beach	4507	Godwin Beach	4511
Beachmere	4510	Meldate	4510
Bellara	4507	Moodlu	4510
Bellmere	4510	Moorina	4506
Ballthorpe	4514	Morayfield	4506
Bongaree	4507	Mount Delaney	4514
Boorobin	4514	Mount Mee	4521
Bracalba	4514	Narangba	4504
Burpengary	4505	Neurum	4514
Caboolture	4510	Ningi	4511
Caboolture South	4510	Rocksberg	4510
Campbells Pocket	4514	Sandstone Point	4511
Cedarton	4514	Stanmore	4514
Commissioners Flat	4514	Stony Creek	4514
D'Aguiar	4514	Toorbul	4510
Deception bay	4508	Upper Caboolture	4510
Delaney Creek	4514	Wamuran	4512
Donnybrook	4510	Wamuran basin	4512
Elimbah	4516	White Ptach	4507
		Woodford	4514
		Woorim	4507



Suburbs and Postcodes within the Caloundra City Council area

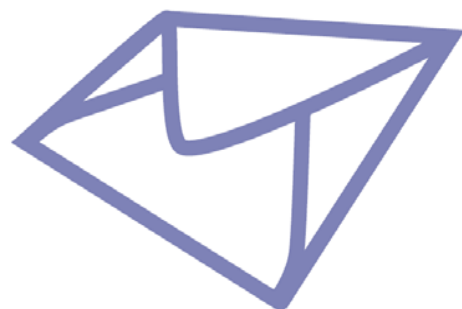


Locality Boundaries ~ Caloundra City

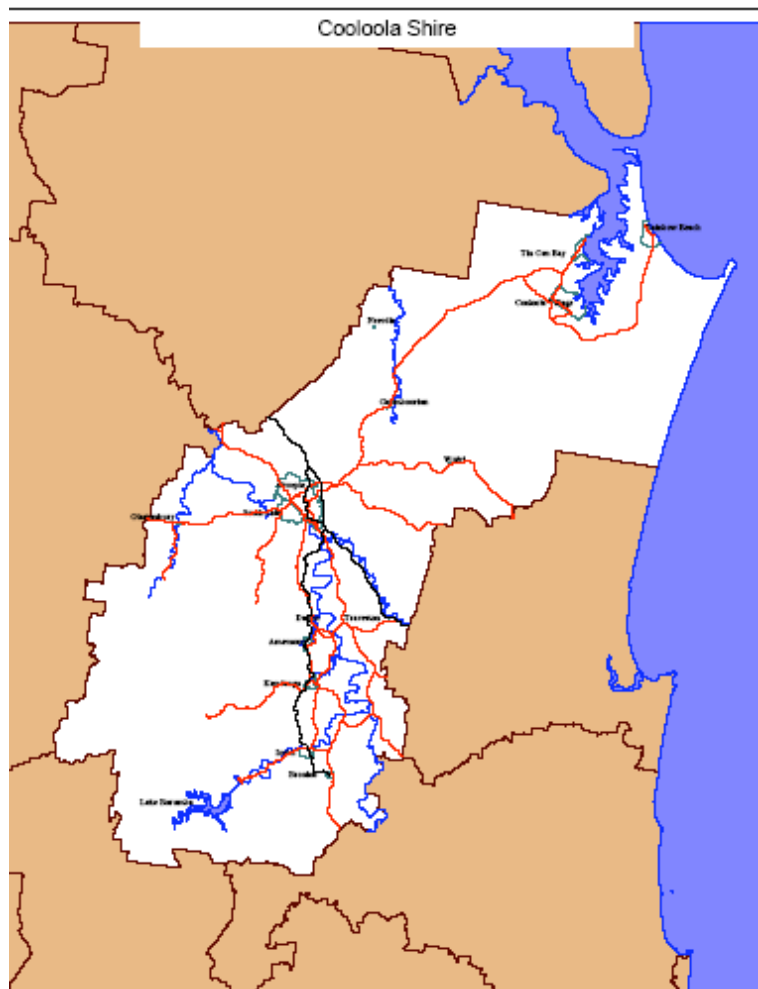


Legend
Locality Boundaries

Bald Knob	4552	Harper Creek	4552
Balmoral Ridge	4552	Kidaman Creek	4574
Battery Hill	4551	Kings Beach	4551
Beerburrum	4517	Landsborough	4550
Beerwah	4519	Little Mountain	4551
Bells Creek	4551	Maleny	4552
Birtinya	4575	Meridan Plains	4551
Bokarina	4575	Minyama	4575
Booroobin	4552	Moffat Beach	4551
Bribie Island North	4507	Mooloolah Valley	4553
Buddina	4575	Mount Mellum	4550
Caloundra	4551	North Maleny	4552
Caloundra West	4551	Palmview	4553
Cambroon	4552	Parrearra	4575
Conondale	4552	Peachester	4519
Coochin Creek	4519	Pelican Waters	4551
Crohamhurst	4519	Reesville	4552
Curramore	4552	Shelly Beach	4551
Currimundi	4551	Warana	4575
Diamond Valley	4553	Witta	4552
Dicky Beach	4551	Wootha	4552
Elaman Creek	4552	Wurtulla	4575
Glass House Mountains	4518		
Glenview	4553		
Golden Beach	4551		



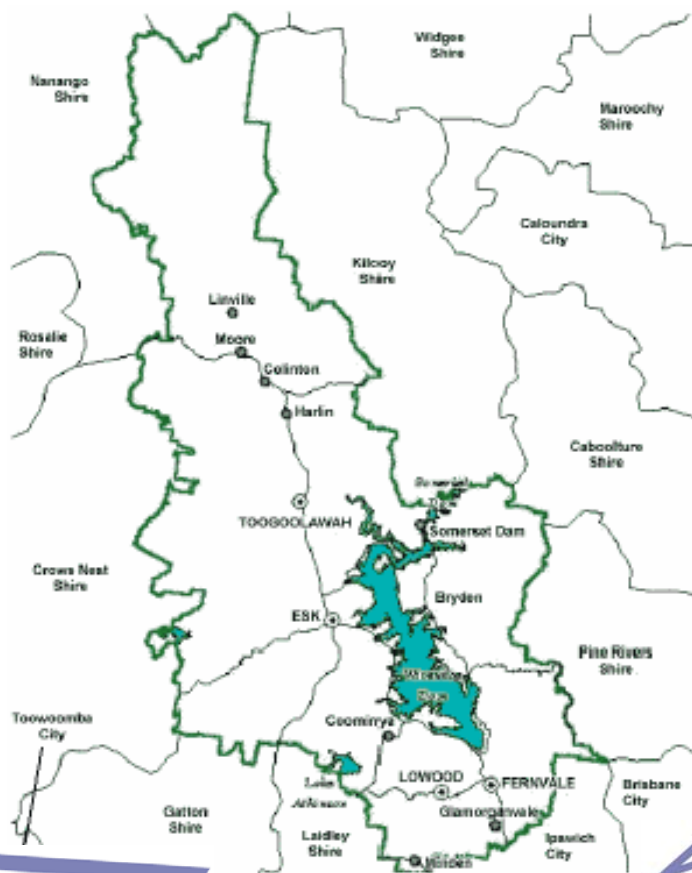
Suburbs and Postcodes within the Cooloolo Shire Council area



Amamoor	4570	East Deep Creek	4570	Monkland	4570
Amamoor Creek	4570	Fishermans Pocket	4570	Mooloo	4570
Araluen	4571	Gilldora	4570	Mothar Mountain	4570
Banks Pocket	4570	Glanmire	4570	Moy Pocket	4574
Beenaam Valley	4570	Glastonbury	4570	Nahrunda	4570
Bella Creek	4570	Goomboorian	4570	Neerdie	4570
Bells Bridge	4570	Greens Creek	4570	Neusa Vale	4570
Bollier	4570	Gympie	4570	North Deep Creek	4570
Brooloo	4570	Imbil	4570	Pie Creek	4570
Calico Creek	4570	Inskip	4581	Rainbow Beach	4581
Canina	4570	Jones Hill	4570	Ross Creek	4570
Carters Ridge	4563	Kandanga	4570	Scrubby Creek	4570
Cedar Pocket	4570	Kandanga Creek	4570	Southside	4570
Chatsworth	4570	Kia Ora	4570	Tagigan	4570
Coles Creek	4570	Kybong	4570	Tamaree	4570
Cooloolo	4580	Lagoon Pocket	4570	Tandur	4570
Cooloolo Cove	4580	Lake Borumba	4570	The Dawn	4570
Coondoo	4570	Langshaw	4570	The Dawn	4570
Corella	4570	Long Flat	4570	Tin Can Bay	4580
Creens Creek	4570	Marys Creek	4570	Toolara Forest	4570
Dagun	4570	Mcintosh Creek	4570	Traveston	4570
Downsfield	4570	Melawondi	4570	Tuchekoi	4570
				Two Mile	4570
				Upper Glastonbury	4570
				Upper Kandanga	4570
				Veteran	4570



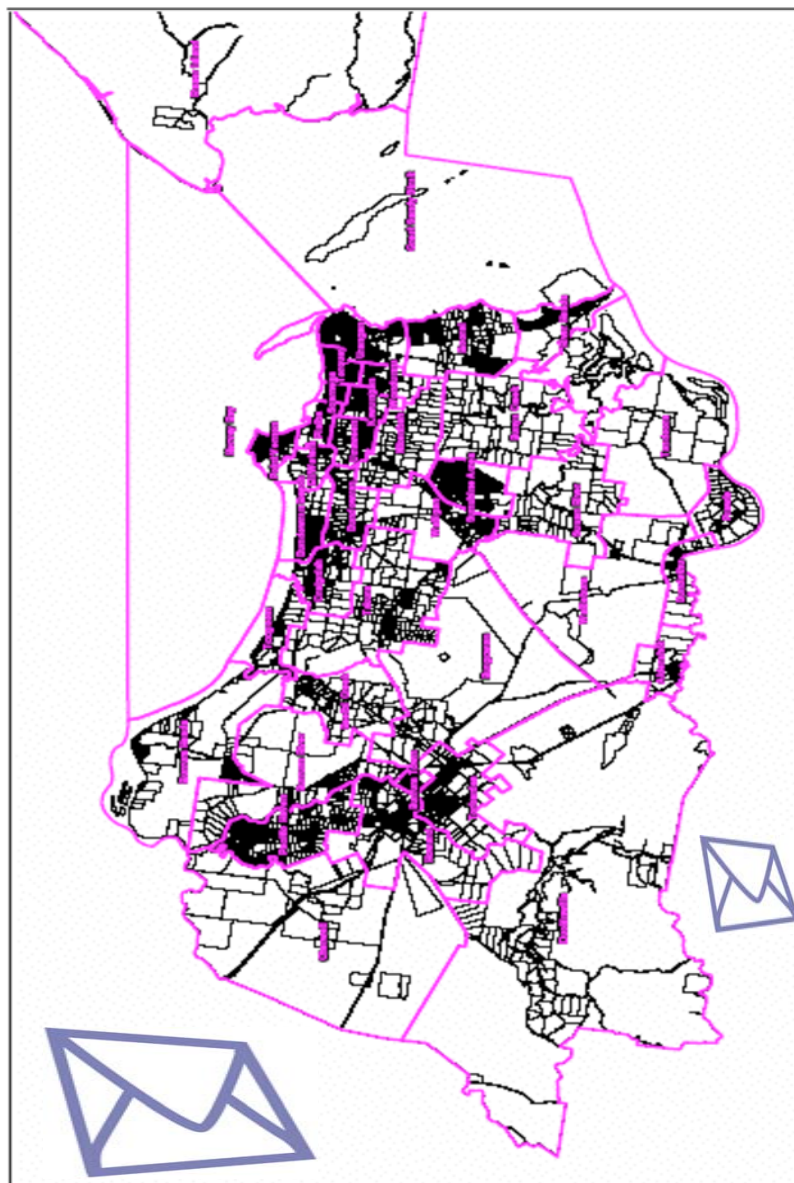
Suburbs and Postcodes within the Esk Shire Council area



Fernvale	4306
Brightview	4311
Bryden	4312
Colinton	4306
Coolana	4311
Coominya	4311
Esk	4312
Eskdale	4312
Glamorganvale	4306
Harlin	4306
Linville	4306
Lowood	4311
Minden	4311
Moore	4306
Mount Tarampa	4311
Prenzlau	4311
Somerset Dam	4306
Tarampa	4311
Toogoolawah	4313

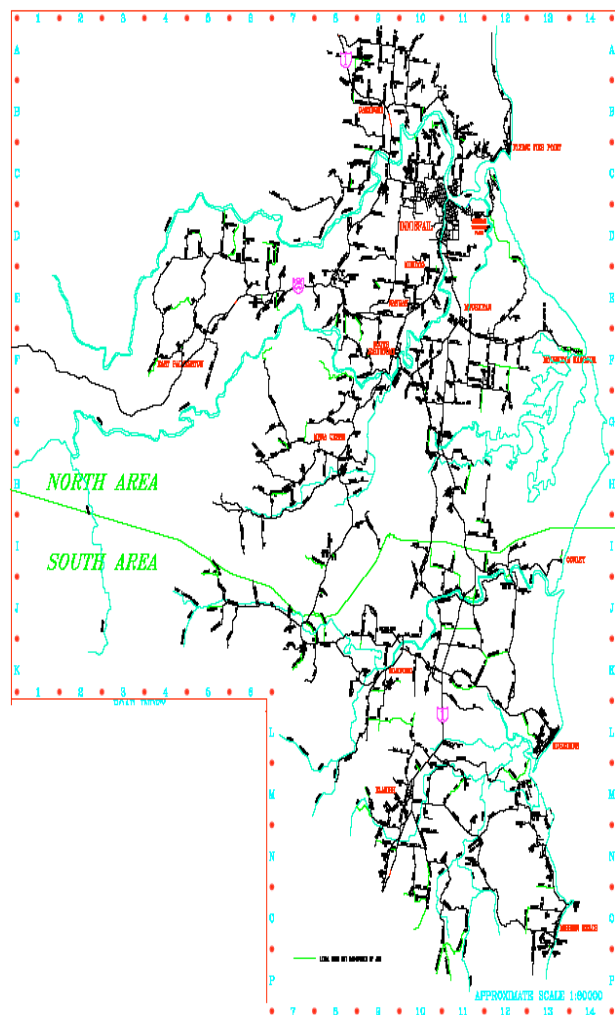


Suburbs and Postcodes within the Hervey Bay Council area



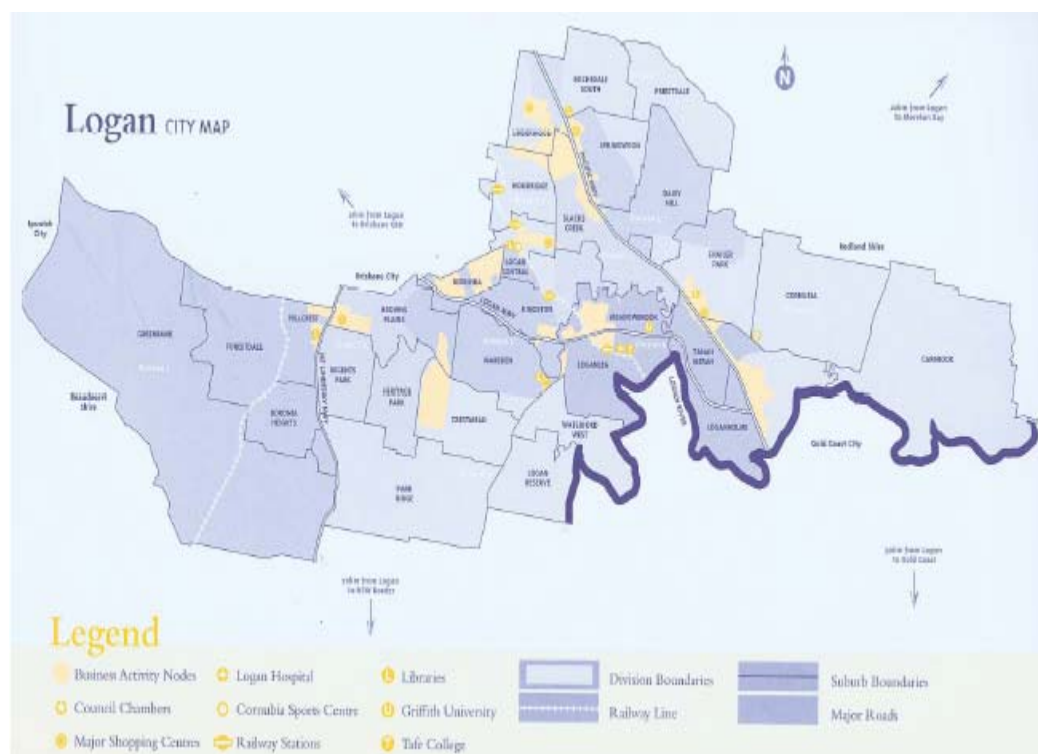
Aldershot	4650	Moon Point/Fraser Island	4655
Beelbi Creek	4659	Nikenbah	4655
Bingham	4655	Orchid Beach/Fraser Island	4659
Bogimbah Creek/Fraser Island	4655	Pacific Haven	4659
Booral	4655	Pialba	4655
Bunya Creek	4655	Point Vernon	4655
Burgowan	4659	Prawle	4650
Burrum	4659	River Heads	4655
Burrum Heads	4659	Riverview	4655
Burrum River	4659	Round Island	4655
Burrum Town	4659	Scarness	4655
Cherwell	4660	Sunshine Acres	4655
Craignish	4655	Susan Island	4655
Duck Island	4655	Susan River	4655
Duckinwilla	4659	Takura	4655
Dundathu	4650	Tandora	4650
Dundowran	4655	Toogoom	4655
Dundowran Beach	4655	Toogoom Park	4655
Eli Waters	4655	Torbanlea	4662
Fraser Island	4655	Torquay	4655
Great Sandy Straits	4655	Urangan	4655
Happy Valley/Fraser Island	4655	Urraween	4655
Hervey Bay	4655	Walliebum	4650
Howard	4659	Walligan	4655
Kangaroo Island	4655	Wondunna	4655
Kawungan	4655	Woody Island	4655

Suburbs and Postcodes within the Johnstone Shire Council area

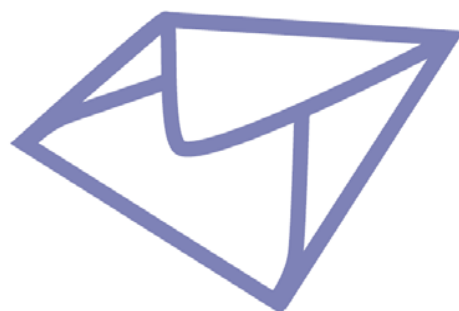


Bamboo Creek	4860	East Innisfail	4860	Innisfail Estate	4860	Moresby	4871
Basilisk	4871	East Palmerston	4860	Jaffa	4855	Mourilyan	4858
Belvedere	4860	Eaton	4860	Japoonvale	4856	Mourilyan Harbour	4858
Bingil Bay	4852	El Arish	4855	Jubilee Heights	4860	Mundoo	4860
Bombeeta	4871	Etty Bay	4858	Lower Cowley	4871	Nerada	4860
Boogan	4871	Eubenangee	4860	Maadi	4855	New Harbourline	4858
Camp Creek	4871	Fitzgerald Creek	4860	Mamu	4855	O'briens Hill	4860
Coconuts	4860	Flying Fish Point	4860	Maria Creeks	4855	Palmerston	4860
Comoon Loop	4858	Friday Pocket	4855	Martyville	4858	Pin Gin Hill	4860
Cooroo Lands	4860	Garners Beach	4852	Kurrimine Beach	4871	Sandy Pocket	4871
Coorumba	4860	Garradunga	4860	Lower Cowley	4871	Shell Pocket	4855
Coquette Point	4860	Germantown	4871	Maadi	4855	Silkwood	4857
Cowley	4871	Goolboo	4871	Mamu	4855	Stoters Hill	4860
Cowley Beach	4871	Goondi	4860	Maria Creeks	4855	Sundown	4860
Cowley Creek	4871	Goondi Bend	4860	Martyville	4858	Upper Daradgee	4860
Cullinane	4860	Goondi Hill	4860	Mccutcheon	4856	Utchee Creek	4871
Currajah	4871	Granadilla	4855	Mena Creek	4871	Vasa Views	4860
Daradgee	4860	Gulngai	4855	Midgereee Bar	4852	Walter Lever Estate	4856
Daveson	4855	Hudson	4860	Mighell	4860	Wangan	4871
Djiru	4852	Innisfail	4860	Mission Beach	4852	Wanjuru	4860
						Warrubullen	4871
						Webb	4860
						Wooroonooran	4860

Suburbs and Postcodes within the Logan City Council area



Berrinba	4117	
Boronia Heights	4124	
Browns Plains	4118	
Carbrook	4130	
Cornubia	4130	
Crestmead	4132	
Daisy Hill	4127	
Forestdale	4118	
Greenbank	4124	
Heritage Park	4118	
Hillcrest	4118	
Kingston	4114	
Logan Central	4114	
Logan Reserve	4133	
Loganholme	4129	
Loganlea	4131	
Marsden	4132	
Meadowbrook	4131	
Park Ridge	4125	
Priestdale	4127	
Regents Park	4118	
Rosedale South	4123	
Shailer Park	4128	
Slacks Creek	4127	
Springwood	4127	
Tanah Merah	4128	
Underwood	4119	
Waterford West	4133	
Woodridge	4114	



Contact the Council Media Sales Team

Email: sales@cmsi.com.au

Council Media Sales
Suite 302
620 St. Kilda Rd
Melbourne VIC 3004
ABN: 98 074 932 997

Ph: (03) 9510 5510
Fx: (03) 9510 1675

